

IN THE WAKE OF SCOTT & SHACKLETON

VENTURE INTO THE HEART OF
ANTARCTICA – THE ROSS SEA

EXPEDITION DOSSIER

7 JANUARY – 3 FEBRUARY 2025

2 FEBRUARY – 1 MARCH 2025



HERITAGE
EXPEDITIONS





© C Finch



© A Woods



© A Schluter



The Ross Sea region of Antarctica is one of the most remote places on Planet Earth and one of the most fascinating places in the continent's human history. With shipping restricted by impenetrable pack ice to just two brief months each austral summer, few people have ever visited this strange and beautiful territory, with opportunities for non-scientific personnel limited to a handful of tourist expedition ships.

Heritage Expeditions offers such a voyage on its own fully equipped and ice-strengthened ship *Heritage Adventurer*, crewed by some of the most experienced officers and sailors in the world and staffed by a passionate and knowledgeable expedition team. This is a unique opportunity to experience nature on a scale so grand there are no words to describe it.

The Ross Sea takes its name from Sir James Clark Ross who discovered it in 1841. The British Royal Geographical Society chose the Ross Sea for the now famous British National Antarctic Expedition in 1901-04 led by Robert Falcon Scott. That one expedition spawned what is sometimes referred to as the 'Race to the Pole'.

Ernest Shackleton almost succeeded in 1907-09 and the Japanese explorer Nobu Shirase tried in 1910-12. Scott thought it was his, but was beaten by his rival, Norwegian Roald Amundsen in the summer of 1911. Shackleton's Trans-Antarctic expedition in 1914-17

marked the end of this 'heroic' or 'golden age' of exploration, but many of the relics of this era, including some huts, remain. The dramatic landscape described by these early explorers is unchanged. Mt Erebus, Mt Discovery and the Transantarctic Mountains are as inspiring today as they were 100 years ago. The penguin rookeries described by the early biologists fluctuate in numbers from year to year, but they still occupy the same sites. The seals, which are no longer hunted for food lie around on ice floes seemingly unperturbed. The whales, which were hunted so ruthlessly here in the 1920s, are now returning. Snow Petrels, Wilson's Storm-petrels, Antarctic Prions and South Polar Skuas all breed in this seemingly inhospitable environment.

There is so much to do and so much to see here, from exploring historic huts and sites to visiting penguin rookeries, marvelling at the glacial ice tongues and ice shelves, and understanding the icebergs and sea ice. Then there are all the seabirds, seals and whales to observe and photograph, modern scientific bases and field camps to visit and simply the opportunity to spend time drinking in the marvellous landscape that has always enthralled visitors.

Lying like stepping stones to the Antarctic continent are the little known Subantarctic Islands. Our journey also includes The Snares, Auckland, Macquarie and Campbell Islands. They break our long journey, but more importantly, they help prepare us for what lies ahead, for these islands are part of the amazing and dynamic Southern Ocean ecosystem of which Antarctica is at the very heart. It is the powerhouse which drives this ecosystem upon which the world depends.



© R Young

ITINERARY

Day 1: Queenstown

Arrive at Queenstown, New Zealand's world famous alpine resort town. Guests should make their way to the designated hotel where we will spend the first night of the expedition. This evening there will be an informal get-together at the hotel for dinner; an excellent opportunity to meet fellow adventurers on your voyage and some of our expedition team.

Day 2: Port of Bluff

Today we enjoy breakfast in the hotel restaurant and have the morning free to explore Queenstown before returning to the hotel for lunch and departing for the Port of Bluff to embark your ship. You will have time to settle into your cabin and familiarise yourself with the ship; we will also take the opportunity to conduct a number of safety briefings. You are invited to join the expedition team in the Observation Lounge and up on the Observation Deck as we set our course to The Snares and our adventure begins.

Day 3: The Snares – North East Island

The closest Subantarctic Islands to New Zealand, they were appropriately called The Snares because they were probably considered a hazard by their discoverer Lieutenant Broughton in 1795. Comprising of two main islands and a smattering of rocky islets, they are uninhabited and highly protected.

North East Island is the largest of The Snares and it is claimed that this one island is home to more nesting seabirds than all of the British Isles together. We will arrive early in the morning and cruise along the sheltered eastern side



© R Robinson

of the rugged coastline by Zodiac if weather and sea conditions are suitable (landings are not permitted). In the sheltered bays, we should see the endemic Snares Crested Penguins, Snares Island Tomtit and Fernbirds. Cape Pigeons and Antarctic Terns are also present in good numbers. There are hundreds of thousands of Sooty Shearwaters nesting on The Snares; the actual number is much debated. Around Christmas time each year the Buller's Albatross return here to nest.

Day 4: Auckland Islands – Enderby Island

The Auckland Islands group was formed by two volcanoes which erupted some 10-25 million years ago. They have subsequently been eroded and dissected by glaciation creating the archipelago as we know it today. Enderby Island is one of the most beautiful islands in this group and is named for the distinguished shipping family. This northern most island in the archipelago is an outstanding wildlife and birding location and is relatively easy to land on and walk around. The island was cleared of all introduced animals (pests) in 1994 and both birds and the vegetation, especially the herbaceous plants, are recovering both in numbers and diversity. Our plan is to land at

Sandy Bay, one of three breeding areas in the Auckland Islands for the Hooker's or New Zealand Sea Lion, a rare member of the seal family. Beachmaster bulls gather on the beach defending their harems and mating with the cows shortly after they have given birth of a single pup.

On shore there will be several options, some longer walks, some shorter walks and time to spend just sitting and enjoying the wildlife. The walking is relatively easy, a board walk traverses the island to the dramatic western cliffs from there we follow the coast on the circumnavigation of the island. Birds that we are likely to encounter include the following species: Southern Royal Albatross, Northern Giant Petrel, Auckland Island Shag, Auckland Island Flightless Teal, Auckland Island Banded Dotterel, Auckland Island Tomtit, Bellbird, Pipit, Red-crowned Parakeet, Yellow-eyed Penguin and Light-mantled Sooty Albatross. There is also a very good chance of seeing the Subantarctic Snipe.

Day 5: At Sea

At sea, learn more about the biology and history of the Subantarctic Islands and the Southern Ocean through a series of lectures and presentations. We will be at sea all day, so it



is another opportunity to spot pelagic species including (but not limited to) the Wandering Albatross, Royal Albatross, Shy and White-capped Albatross, Light-mantled Sooty Albatross, Grey-headed Albatross and Black-browed Albatross, White-chinned Petrel, Mottled Petrel, White-headed Petrel, Cape Petrel, diving-petrel, Grey-backed and Black-bellied Storm-petrels. This is potentially some of the best pelagic 'birding' on the expedition.

Days 6 to 7: Macquarie Island

Australia's prized Subantarctic possession, it supports one of the highest concentrations of wildlife in the Southern Ocean. Millions of penguins of four different species – King, Rockhopper, Gentoo and the endemic Royal – breed here. We plan to spend our time divided between the two approved landing sites, Sandy Bay and Buckles Bay as well as a Zodiac cruise at Lusitania Bay if weather conditions permit.

At Sandy Bay a Royal Penguin rookery teems with feisty little birds trotting back and forth, golden head plumes bobbing as they march to and from the shore. All three million of the world's Royal



© T Kraakman



Penguins breed on Macquarie Island. There is also a substantial King Penguin Colony. Some of the best observations will be had by quietly sitting and letting the birds come to you. They are both unafraid and inquisitive – the combination is unique.

At Buckles Bay we plan to have a guided tour of the Australian Antarctic Division Base which was established in the late 1940s and has been manned continuously since then. Large groups of Southern Elephant Seals slumber on the beaches and in the tussock at both of our landing sites. These giant, blubbery creatures will barely acknowledge our presence, lying in groups of intertwined bodies, undergoing their annual moult. Younger bulls spar in the shallow water, preparing for their mature years when they will look after their own harems.

The King Penguin rookery at Lusitania Bay is noisy and spectacular. A welcoming committee will likely porpoise around our Zodiacs as a quarter of a million King Penguins stand at attention on shore. In the centre of the rookery, rusting digesters are grim reminders of a time when scores of penguins were slaughtered for their oil. Now their offspring have reclaimed this territory.

The Tasmanian National Parks and Wildlife Service, who administer the island, embarked on a very ambitious 7-year eradication programme resulting in the island earning pest-free status in 2014. Both the birds and plants have responded and it is amazing to witness the regeneration and the increase in the number of birds. It is an amazing island, in addition to the penguins and elephant seals, there are three species of fur seals to be found there and four species of albatross, Wandering, Black-browed, Grey-headed and Light-mantled Sooty.

Days 8 to 10: At Sea

Soaring albatross and petrels circle the vessel as we steam ever southward through the Southern Ocean. Lectures now concentrate on Antarctica and the Ross Sea region. We will pay

attention to water temperatures so that we know when we cross the Antarctic Convergence into the cold but extremely productive Antarctic waters. Drifting icebergs carry vivid colours and come in extraordinary shapes. Each is a unique, natural sculpture. The captain will manoeuvre the ship in close for your first ice photograph and we will celebrate as we pass the Antarctic Circle and into Antarctica's realm of 24-hour daylight! Relax in the ship's bar and catch up with some reading in the library. If you have brought your laptop with you there will be time to download and edit photos while they are fresh in your mind.

Days 11 to 22: Antarctica's Ross Sea Region

During our time in the Ross Sea region, we will visit the highlights of Antarctica's most historic region. Due to the unpredictable nature of ice and weather conditions, a day-by-day itinerary is not possible. The Captain and Expedition Leader will assess daily conditions and take advantage of every opportunity to make landings or send you out in the Zodiacs. Our programme emphasises wildlife viewing, key scientific bases and historic sites, as well as the spectacular scenery



of the coastal terrain, the glaciers and icebergs of the Ross Sea. Whilst specific landings cannot be guaranteed, we hope to visit the following:

Cape Adare

Cape Adare's bold headland and the Downshire Cliffs greet us as we approach Cape Adare – ice conditions permitting – at the tip of the Ross Sea, the site of the largest Adelie Penguin rookery in Antarctica. Blanketing the large, flat spit which forms the cape is the huge rookery which now, at the height of summer, numbers over one million birds – an absolutely staggering sight. You will never forget your first experiences in a ceaselessly active and noisy 'penguin city', where the dapper inhabitants show no fear of their strange visitors. Our naturalists will point out various aspects of their lifestyle and, by sitting down quietly, one may observe the often comical behaviour of the penguins, courtship displays, feeding ever-hungry chicks, territorial disputes and the pilfering of nest material. Surrounded by a sea of penguins we will find Borchgrevink's Hut, the oldest in Antarctica, an overwintering shelter for the first expedition to the continent in 1899. It is a fascinating relic of the 'Heroic Age' of Antarctic exploration and



© A Russ

we are able to inspect the interior, which still contains artefacts of the early explorers. One thousand feet up in the hills behind Cape Adare is the oldest grave in Antarctica, that of 22-year-old Nicolai Hansen, a member of Borchgrevink's expedition.

Cape Hallett

The enormous Admiralty Range heralds our arrival at Cape Hallett, near the head of the Ross Sea. The scenery here is wild and spectacular; mountains rear up towering out of the sea to over 4,000-metres high and giant glaciers course down from the interior to the water's edge. We land next to the site of the

abandoned American/New Zealand base, home to large numbers of Adelie Penguins and Weddell Seals.

Franklin Island

This rugged island, deep in the Ross Sea, is home to a large Adelie Penguin colony and other nesting seabirds. We will attempt a Zodiac landing near the rookery as well as exploring the coastline. If a landing is achieved and weather conditions are suitable there will be an opportunity to explore this remarkable island.

Possession Islands

These small, rugged and rarely visited islands lie off the shore of Cape Hallett. An Adelie Penguin rookery, numbering tens of thousands of birds, blankets Foyn Island. Observe their busy and sometimes humorous activities, with the Admiralty Mountains forming a superb backdrop across the water.

Ross Ice Shelf

The largest ice shelf in Antarctica, the Ross Ice Shelf is also the world's largest body of floating ice. A natural ice barrier, at times it creates hazardous weather conditions, with sheets of snow blown at gale force by the



© S Blanc

katabatic winds coming off the polar ice cap. Just 1,287 kilometres from the South Pole, this daunting spectacle prevented many early Antarctic explorers from venturing further south. From the Ross Ice Shelf we cruise eastward along the shelf front, with its spectacular 30-metre high ice cliffs, which sometimes calve tabular icebergs.

Ross Island – Mount Erebus/ Cape Bird/Shackleton's Hut/ Scott's Hut

At the base of the Ross Sea we arrive at Ross Island, dominated by the 3,794-metre high volcano, Mt Erebus. The New Zealand Antarctica programme maintains a field station at Cape Bird, where scientists study many aspects of the region's natural history, including the large Adelie Penguin colony. At Cape Royds we visit Sir Ernest Shackleton's hut, built during the Nimrod polar expedition of 1907-1909. Lectures explain many facets of Shackleton's amazing expeditions. He was possibly one of the greatest, and certainly one of the most heroic of the Antarctic explorers. Though the legendary explorers are long gone, the area around the hut is far from deserted, having been reclaimed by the original inhabitants of the area – thousands of Adelie Penguins in the world's southernmost penguin rookery.

Also found on Ross Island is Cape Evans, the historic site of Captain Scott's second hut, erected in 1911 and beautifully preserved by the Antarctic Heritage Trust. It stands as testimony to the rigours faced by pioneering explorers. Inside the hut we will witness the living conditions almost exactly as they were when Scott, Wilson and Ponting occupied these quarters. Behind the hut, Mt Erebus looms above with its plume of white smoke spiralling up from the still-active inferno in its bowels.



McMurdo and Scott Base (including Scott's Discovery Hut)

These are always on our wish list but ice, weather and operational requirements for the National Programs icebreaker activities sometimes prevent us from visiting, especially on the January expedition. Our February expedition is generally more successful but not guaranteed.

Terra Nova Bay

Stazione Mario Zucchelli, an Italian summer research station, is an interesting shipping container construction. The friendly scientists and support staff here are always most hospitable and enjoy showing us around their lonely but beautiful home. The Italians conduct many streams of scientific research and also claim to have the best 'espresso' in Antarctica! Nearby is the German base, Gondwana Station, which is

used occasionally and the South Korean station, Jang Bogo and on Inexpressible Island, China is building its fifth Antarctic base.

Days 23 to 25: At Sea

En route to Campbell Island, take part in a series of lectures designed to prepare you for our visit tomorrow. Pelagic species abound here as they did en route to Macquarie Island earlier in our voyage. Above all, take the time to rest and enjoy shipboard life after the excitement of the Antarctic.

Day 26: Campbell Island – Perseverance Harbour

New Zealand's southernmost Subantarctic territory, the Campbell Island group lies approximately 660-kilometres south of Bluff. We visit Campbell Island, the main island in the group, and spend the day exploring the island on foot from Perseverance Harbour, a long





© L Davilla

inlet cutting into the undulating landscape. Campbell Island is a truly magnificent place of rugged scenery, unique flora and abundant wildlife. Perseverance Harbour where we drop anchor is an occasional refuge for Southern Right Whales who come here to calve. Here we will find a now abandoned New Zealand meteorological station as well as Campbell Island Shags, penguins, fur seals and rare Hooker's/New Zealand Sea Lions.

The highlight of our visit is a walk to the hilltop breeding sites of Southern Royal Albatross, over six thousand pairs of which breed on Campbell Island. These magnificent birds, close relations to, and the same size as, the Wandering Albatross, have the largest wingspan in the world and are very approachable, making superb photographic subjects.

Day 27: At Sea

At sea en route to the Port of Bluff, take the opportunity to relax and reflect on an amazing experience. This is a good opportunity to download and edit any remaining photos while

they are fresh in your mind and you have the experience of our expedition team on board for questions. We will recap the highlights of our expedition and enjoy a farewell dinner tonight as we sail to our final port.

Day 28: Invercargill/ Queenstown

Early this morning we will arrive in the Port of Bluff. After a final breakfast and completing Custom formalities we bid farewell to our fellow voyagers and take a complimentary coach transfer to either Invercargill or Queenstown Airports. In case of unexpected

delays due to weather and/or port operations we ask you not to book any onward travel until after midday from Invercargill and after 3pm from Queenstown.

Note: During our voyage, circumstances may make it necessary or desirable to deviate from the proposed itinerary. This can include poor weather and opportunities for making unplanned excursions. Your Expedition Leader will keep you fully informed. Landings at the Subantarctic Islands of New Zealand are by permit only as administered by the Government of New Zealand. No landings are permitted at The Snares.



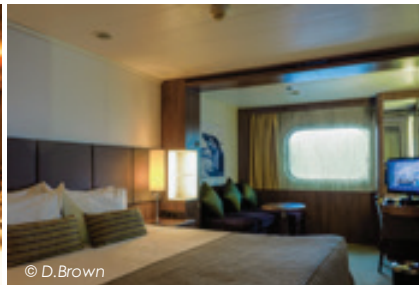
© C Finch



© A. Breniere



© F. Wardle



© D. Brown

HERITAGE ADVENTURER

Heritage Adventurer is a true pioneering expedition vessel of exceptional pedigree often referred to as the 'Grande Dame of Polar Exploration'.

Purpose built for adventure in 1991 at Finland's Rauma shipyard and specifically designed for Polar exploration, *Heritage Adventurer* (formerly known as *MS Hanseatic*) is 124-metres long, boasts the highest passenger-ship ice-class rating (1A Super) and an impressive history of Polar and remote region exploration making her perfect for Heritage Expeditions signature experiential expedition travel.

Originally designed to accommodate 184 guests, we now welcome just 140 expeditioners to create a spacious, comfortable on board experience and continuation of the exceptional, personalised expedition experience synonymous with the company. While a fleet of 14 Zodiacs ensures

all guests are able to maximise their expedition experience. On board, enjoy stylish, sophisticated accommodations spanning 4 decks, visit the captain and crew in the Bridge with our Open Bridge Policy and dine on gourmet fare from leading chefs.

Watch your adventure unfold from numerous spectacular indoor and outdoor viewing locations including *Heritage Adventurer's* famed Observation Lounge resplendent with 270-degree views and join our world-renowned team of naturalists, botanists, historians and experts as they interpret the natural and human history discovered during each voyage, as well as hosting regular lectures.

And should you require a little R&R, unwind in the library, pool, gym, hot tub, sauna and steam room, indulge in some retail therapy or find a quiet place to enjoy a coffee or cocktail from the café and bar.

DATES

Voyage #HA250107
7 January – 3 February 2025

Voyage #HA250202
2 February – 1 March 2025

PRICES

Heritage Suite €60,000 pp*
Located on Deck 6, Heritage Suites are an expansive 44m² and feature large double panoramic windows, king bed, large living area with a sofa, coffee table and chairs and grand marble bathroom with a double basin, bathtub and shower, large writing desk, floor to ceiling cabinetry for storage and a flat screen entertainment system.

Worsley Suite €40,995 pp*
Located on Deck 6, Worsley Suites are a spacious 22m² and feature large panoramic windows, king or two single beds, comfortable chaise-style lounge suite, writing desk, private en-suite with shower, ample storage and a flat screen entertainment system.

Superior Single €41,995 pp*
Superior Single Cabins on Deck 5 are a spacious 22m² and feature large panoramic windows, king bed, comfortable lounge, writing desk, private en-suite with shower, ample storage and a flat screen entertainment system.

Superior Triple €31,250 pp*
Superior Triple Cabins on Deck 5 are a spacious 22m² and feature large panoramic windows, two single beds and one Pullman bed which folds down from the wall, comfortable lounge, writing desk, private en-suite with shower, ample storage and a flat screen entertainment system.

Superior Deck 5 €34,250 pp*
Superior Cabins on Deck 5 are a spacious 22m² and feature large panoramic windows, king or two single beds, comfortable lounge, writing desk, private en-suite with shower, ample storage and a flat screen entertainment system.

Superior Deck 4 €32,995 pp*
Superior Cabins on Deck 4 are a spacious 22m² and feature large panoramic windows, king or two single beds, comfortable lounge, writing desk, private en-suite with shower, ample storage and a flat screen entertainment system.

Main Deck Single €39,995 pp*
Main Deck Single Cabins on Deck 3 are a spacious 22m² and feature two porthole windows, king bed, comfortable lounge, writing desk, private en-suite with shower, ample storage and a flat screen entertainment system.

Main Deck Triple €29,995 pp*
Main Deck Triple Cabins on Deck 3 are a spacious 22m² and feature two porthole windows, two single beds and one Pullman bed which folds down from the wall, comfortable lounge, writing desk, private en-suite with shower, ample storage and a flat screen entertainment system.

* The price listed includes the additional local payment of EUR€1 100 (All prices are per person in EUR€).

PRICE INCLUDES

Local payment, pre/post cruise transfers, one night hotel accommodation in a twin share room (incl. dinner/breakfast), all on board ship accommodation with meals, house beer, wine and soft drinks with lunch and dinner and all expedition shore excursions. Programme of lectures by noted naturalists.

PRICE EXCLUDES

All items of a personal nature, laundry, drinks, gratuities. International/domestic flights, visas and travel insurance.

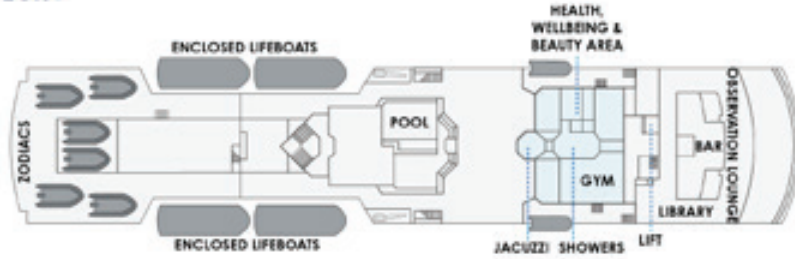
26/01/2022

Heritage Adventurer Deck Plan



- DECK 6: ● WORSLEY SUITE ● HERITAGE SUITE
- DECK 5: ● SUPERIOR ● SUPERIOR TRIPLE ● SUPERIOR SINGLE
- DECK 4: ● SUPERIOR
- DECK 3: ● MAIN DECK TRIPLE ● MAIN DECK SINGLE

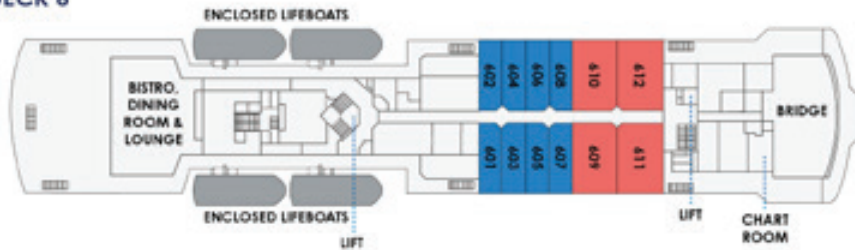
DECK 7



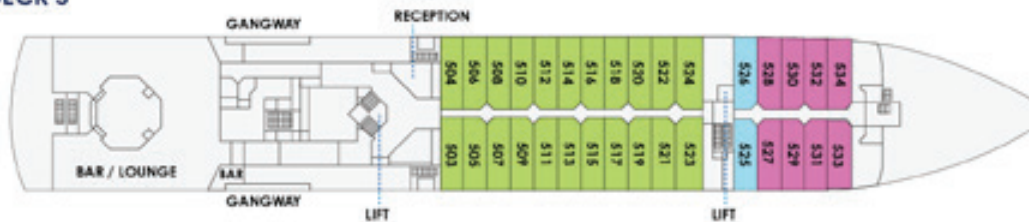
DECK 8



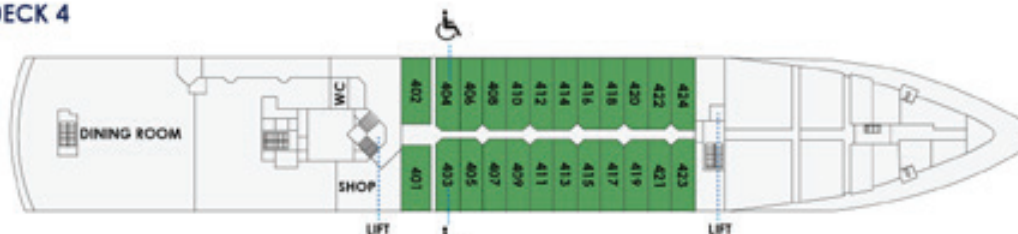
DECK 6



DECK 5



DECK 4



DECK 3



DECK 2



SUITE CATEGORIES

- HERITAGE SUITE
- SUPERIOR SINGLE
- DECK 4 SUPERIOR
- MAIN DECK SINGLE
- WORSLEY SUITE
- DECK 5 SUPERIOR
- MAIN DECK TRIPLE
- SUPERIOR TRIPLE



HERITAGE EXPEDITIONS